

# VYR-70 VC



## VYR-70 VC · Full circle AG

### GENERAL PROPERTIES:

- Agricultural impact sprinkler with medium-high flow.
- 1" male or female connection.
- Made of brass and stainless steel.
- High-resistance rotating joints.
- Nozzle angles of 26° and 26°
- Special design for long reach.
- Used in full coverage irrigation with medium-high flow.

### TECHNICAL SPECIFICATIONS:

- Range distance: 13,5 - 27 m / 44 - 89 ft.
- Flow: 2000 - 9400 L/H / 528 - 2480 GPH.
- Working pressure: 2,75 - 6 BAR / 36 87 PSI.
- Area: Full circle.
- Nozzles: Two nozzles: one main nozzle and a secondary nozzle.
- Trajectory angles: 26° and 26°
- Maximum stream height: 5 m / 16,5 ft.
- Rotation time: Depending on the pressure and the nozzles, the rotation will be constant and continuous.
- Uniformity coefficient higher than 90% in areas of 20x20R, 22x22T and 22x24T (meters).

### APPLICATIONS:

- Used in all types of agricultural irrigation, generally with medium-high flows. Horticultural plantations, cereals, tubers, leguminous plants and fruit trees.

### MEASUREMENTS:

- Height: 20 cm / 7,9 in.
- Width: 25 cm / 8,7 in.
- Weight: 870 g / 1,9 Lbs.
- Units per box: 25

### OPTIONS:

- Threads in BSP or NPT under demand.
- Male and female connection.
- This model is suitable to be used over our irrigation traveller VYR - 5300.

### MODELS:

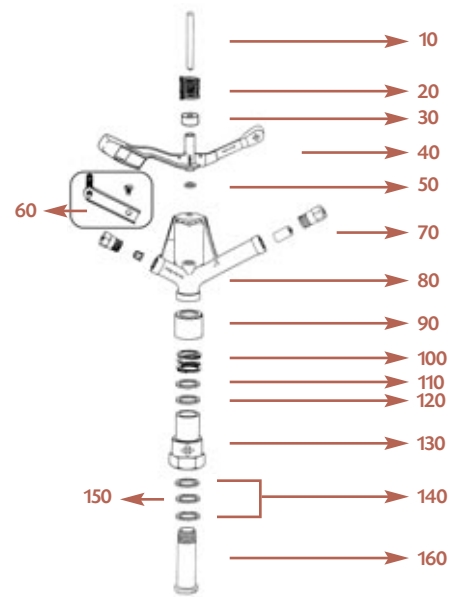
- **Ref. 007010:** 1" female connection.
- **Ref. 007012:** 1" male connection.
- **Ref. 106000:** Difuser pin plate.

## TABLES & PARTS

### Technical guidance table VYR-70 VC

NOZZLE	Spacing (m) / Precipit. rate (mm/h) Spacing (ft) / Precipit. rate (in/h)						
	BAR PSI	18x21 59x68	21x21 68x68	21x24 68x78	24x24 78x78	24x28 78x91	28x28 T 91x91T
5,6 x 4,4 mm 7/32" x 11/64"	3	9,3	8	7	6,1	5,2	4,5
	58	0,37	0,31	0,28	0,24	0,20	0,18
	3,5	9,7	8,4	7,3	6,4	5,5	4,7
6,4 x 4,8 mm 1/4" x 3/16"	65	0,38	0,33	0,29	0,25	0,22	0,19
	4	9,9	8,5	7,1	6,5	5,6	4,8
	73	0,39	0,33	0,28	0,26	0,22	0,19
7,2 x 5,6 mm 9/32" x 7/32"	3	10,6	9,1	8	7	6	5,1
	58	0,42	0,36	0,31	0,28	0,24	0,20
	3,5	12,1	10,4	9,1	7,9	6,8	5,8
7,2 x 5,6 mm 9/32" x 7/32"	65	0,48	0,41	0,36	0,31	0,27	0,23
	4	12,9	11	9,6	8,4	7,2	6,2
	73	0,51	0,43	0,38	0,33	0,28	0,24
7,2 x 5,6 mm 9/32" x 7/32"	3	15,4	13,2	11,5	10,1	8,6	7,4
	58	0,61	0,52	0,45	0,40	0,34	0,29
	3,5	16,3	14	12,2	10,7	9,2	7,9
7,2 x 5,6 mm 9/32" x 7/32"	65	0,64	0,55	0,48	0,42	0,36	0,31
	4	16,5	14,2	12,4	10,9	9,3	8
	73	0,65	0,56	0,49	0,43	0,37	0,31

T: Triang. CU < 85% CU 85-88% CU 88-92% CU > 92%



### Performance nozzle tables VYR-70 VC

#### Long range nozzles (long vane) + short range nozzle

NOZZLE	5,6 x 4,4 mm 7/32" x 11/64"		6,4 x 4,4 mm 1/4" x 11/64"		6,4 x 4,8 mm 1/4" x 3/16"		7,2 x 4,8 mm 9/32" x 3/16"		7,2 x 5,6 mm 9/32" x 7/32"		8,8 x 5,6 mm 11/32" x 7/32"	
	BAR PSI	L/H GPH Ø m Ø ft	L/H GPH Ø m Ø ft	L/H GPH Ø m Ø ft	L/H GPH Ø m Ø ft	L/H GPH Ø m Ø ft	L/H GPH Ø m Ø ft	L/H GPH Ø m Ø ft	L/H GPH Ø m Ø ft	L/H GPH Ø m Ø ft	L/H GPH Ø m Ø ft	L/H GPH Ø m Ø ft
3	3720	39	4115	39	4435	39	5185	43	5335	43	6670	41,4
44	983	128	1087	128	1172	128	1370	141	1409	141	1762	136
3,5	3990	40	4390	42	4745	42	5600	44	5670	44	7225	43,2
51	1054	131	1160	138	1253	138	1479	144	1498	144	1909	142
4	4270	42	4765	44	5100	44	5970	45	6060	45	7715	45
58	1128	138	1259	144	1347	144	1577	148	1601	148	2038	148
4,5	4445	44	4930	46	5460	46	6420	46	6480	46	8100	47,4
65	1174	144	1302	151	1442	151	1696	151	1712	151	2140	156
5	4705	46	5190	48	5785	48	6660	47	6870	47	8580	48,8
73	1243	151	1371	157	1528	157	1759	154	1815	154	2267	160
5,5	4985	47	5490	49	6030	49	6990	49	7200	49	9000	52,4
80	1317	154	1450	161	1593	161	1847	161	1902	161	2378	172

Standard Ø: Diameter range



Ref. 106000

- For optimum distribution avoid use in shady areas.
- Sprinklers will be supplied with standard nozzles unless otherwise specified.
- In order to calculate the flow, add the flows of the two nozzles. The range of the rear nozzle must be less than that of the main nozzle.
- These results has been obtained at indoor laboratory with 0 m/seg win velocity. Outdoor results may change range distances.

